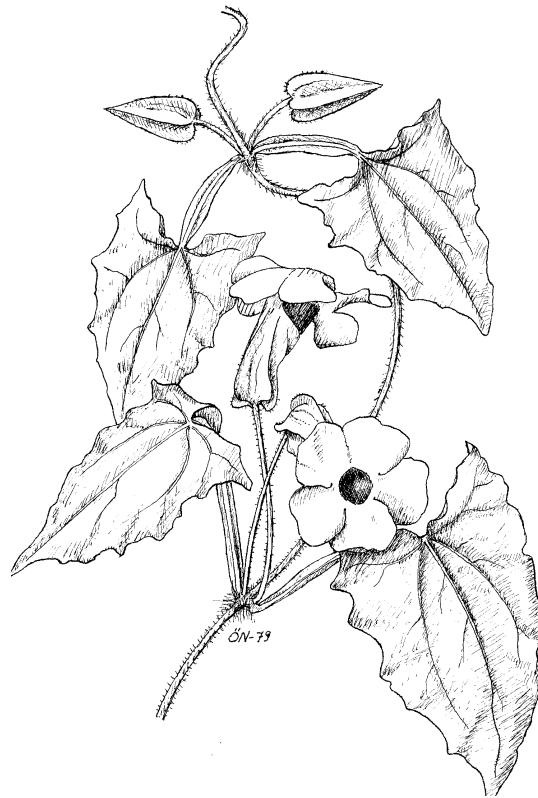


THUNBERGIA

30



Fungi Exsiccati Suecici Praesertim Upsalienses

Mandatu Collegii ex Friesio nominati
edendos curaverunt

L. Holm et S. Ryman

Fasc. 74 (Nos 3601–3650)

DISTRIBUTED BY THE BOTANY SECTION, MUSEUM OF
EVOLUTION UPPSALA UNIVERSITY
2000

THUNBERGIA is the continuation of "Publications from the Herbarium, University of Uppsala", of which 19 numbers were issued between 1978 and 1986. The name is given in memory of Carl Peter Thunberg (1743–1828), a disciple of Linnaeus and a famous traveller to South Africa and Japan. His collections, about twentyseven thousand sheets, were transferred to Uppsala University in 1785, and became the foundation of the Botanical Museum. Thunberg succeeded Linnaeus filius as professor in 1785 and held the professorship to his death.

Thunbergia is issued irregularly and distributed on exchange basis or by order to the address below. From no 28 each issue is available on <http://www-hotel.uu.se/evolmuseum/fytotek> under Publications.

Contributions are refereed by external specialists.

Editor: Roland Moberg

Museum of Evolution
Botany Section
Uppsala University
Norbyvägen 16
SE-752 36 Uppsala, Sweden
Fax: +46 18 471 2794
E-mail: Roland.Moberg@evolmuseum.uu.se

THUNBERGIA 30

Fungi Exsiccati Suecici, Praesertim Upsalienses

Fasc. 73

(Nos 3601–3650)

L. Holm & S. Ryman

UPPSALA 2000

Distributor: Botany Section, Museum of Evolution, Uppsala University

Fungi Exsiccati Suecici, Praesertim Upsalienses

Fasc. 73

Lennart Holm & Svengunnar Ryman

Holm, L. & Ryman, S. 2000. Fungi Exsiccati Suecici, Praesertim Upsalienses. Fasc. 73 (Nos 3601–3650). – *Thunbergia* 30: 1–21. ISSN-0283-2275.

The fascicle comprises 49 Ascomycetes, among them 20 *Erysiphaceae*, and one Coelomycete, a parasite of *Erysiphaceae*. Two new combinations are published: *Glomerella salicis* (Fuckel) L. Holm and *Ophiovalsa hypodermia* (Fr.) L. Holm. Isotype material of *Copromyces bisporus* N. Lundq. is issued.

*Lennart Holm & Svengunnar Ryman, Botany Section, Museum of Evolution, Evolutionary Biology Center, Uppsala University, Norbyvägen 16, S-75236, Uppsala, Sweden.
Email: Svengunnar.Ryman@evolmuseum.uu.se*

FUNGI EXSICCATI SUECICI, PRAESERTIM UPSALIENSES

Ed. cur. L. Holm et S. Ryman

3601. *Loramyces juncicola* W. Weston

Mycologia 21: 72 (1929).

In dead culms of *Scirpus lacustris* (= *Schoenoplectus lacustris*).

SMÅLAND: Femsjö parish, northern shore of Lake Stensjön.

12.IX.1939

leg. Seth Lundell
det. Sven Nilsson 1958

First Swedish find.

FUNGI EXSICCATI SUECICI, PRAESERTIM UPSALIENSES

Ed. cur. L. Holm et S. Ryman

3602. Cordyceps gracilis (Grev.: Fr.) Durieu & Mont.

Flore Algérie 1: 449 (1849) ("1848"). – Syn.: *Xylaria gracilis* Grev., Scott. Crypt. Flora 2: 86 (1824): Fr., Syst. Mycol. Index p. 166 (1832).

On lepidopterous larvae amongst mosses etc. in a grove.

VÄSTERGÖTLAND: Amnehärad parish, Delebäck.

9.V. & 8.VI.1980

leg. Klara Karjel

det. H. Carlstedt

FUNGI EXSICCATI SUECICI, PRAESERTIM UPSALIENSES

Ed. cur. L. Holm et S. Ryman

3603. Hypomyces aurantius (Pers.: Fr.) Tul.

Ann. Sci. Nat. Bot. ser. 4. 13: 12 (1860). – Syn.: *Sphaeria aurantia* Pers., Ic. Descr. Fung. 2: 45 (1800): Fr., Syst. Mycol. 2: 440 (1823).

On rotten *Climacocystis borealis* on fallen spruce.

ÅSELE LAPPMARK: Vilhelmina parish, c. 4 km S of Blaikliden, in virgin spruce forest.

22.VII.1998

leg. & det. Nils Lundqvist (20914)

The same species, on ?*Trametes zonata* on aspen, from Uppland, was distributed as no. 2168.

FUNGI EXSICCATI SUECICI, PRAESERTIM UPSALIENSES

Ed. cur. L. Holm et S. Ryman

3604. Protocrea farinosa (Berk. & Broome) Petch

J. Bot. 75: 219 (1937). – Syn.: *Hypocrea farinosa* Berk. & Broome, Ann. Mag. Nat. Hist. ser. 2.7: 186 (1851).

On *Skeletocutis nivea* on fallen, decayed branch of *Fraxinus excelsior* in deciduous grove.

ÖLAND: Södra Möckleby parish, Albrunna lund (4 km SSE of the parish church).

6.X.1995

leg. & det. Nils Lundqvist (20340)

FUNGI EXSICCATI SUECICI, PRAESERTIM UPSALIENSES

Ed. cur. L. Holm et S. Ryman

3605. *Nectria peziza* (Tode: Fr.) Fr.

Summa Veg. Scand. p. 388 (1849). – Syn.: *Sphaeria peziza* Tode, Fungi Meckl. 2: 46 (1791): Fr., Syst. Mycol. 2: 452 (1823).

On decayed elm log (*Ulmus glabra*).

UPPLAND: Alsike parish, Morga by, c. 1 km S of Fredrikslund.

10.IX.1984 leg. & det. Nils Lundqvist (15283)

The same species, on wood of *Salix* sp., was distributed as no. 1453.

FUNGI EXSICCATI SUECICI, PRAESERTIM UPSALIENSES

Ed. cur. L. Holm et S. Ryman

3606. *Nectria tuberculariformis* (Rehm ex Sacc.) G. Winter

Pyr.-Fl. p. 118 (1882). – Syn.: *Hypocrea tuberculariformis* Rehm ex Sacc., Michelia 1: 302 (1878).

On dead stems of *Urtica dioica*.

MEDELPAD: Borgsjö parish, at the path to the Granbodåsen chalets (c. 10 km NNW of Ånge).

11.IX.1995 leg. & det. Nils Lundqvist (20305)

The fungus is mainly in the conidial state *Acremonium boreale* J.D. Sm. & J.G.N. Davidson, Can. J. Bot. 20: 2138 (1979), det O. Constantinescu.

FUNGI EXSICCATI SUECICI, PRAESERTIM UPSALIENSES

Ed. cur. L. Holm et S. Ryman

3607. *Hypoxylon cohaerens* (Pers.: Fr.) Fr.

Summa Veg. Scand. p. 384 (1849). – Syn.: *Sphaeria cohaerens* Pers., Neues Magazin Botanik 1: 82 (1794): Fr., Syst. Mycol. 2: 333 (1823).

On old fallen trunk of planted *Fagus sylvatica*.

UPPLAND: Harg parish, Fagerön, the beech forest c. 800 m SSE of the former farm Fagerön.

3.V.1998 leg. & det. K. & L. Holm (6121a)
confirm. A. Granmo 1999

Sofar the northernmost find in Scandinavia, maybe in the world. – L.H.

FUNGI EXSICCATI SUECICI, PRAESERTIM UPSALIENSES

Ed. cur. L. Holm et S. Ryman

3608. Copromyces bisporus N. Lundq.

Isotype

Ark. Bot. ser. 2. 6(7): 328 (1967).

On rabbit dung (*Oryctolagus cuniculus*) in moist chamber.

SKÅNE: Ivetofta parish, Åby, in pasture.

8.VI.1962

leg. & det. Nils Lundqvist (3370-g)

FUNGI EXSICCATI SUECICI, PRAESERTIM UPSALIENSES

Ed. cur. L. Holm et S. Ryman

3609a. Lasiosphaeria hirsuta (Fr.: Fr.) Ces. & De Not.

Comm. Soc. Critt. Ital. 1: 229 (1862). – Syn.: *Sphaeria hirsuta* Fr., K. Vet. Acad. Handl. 1817 p. 256 (1817): Fr., Syst. Mycol. 2: 449 (1823), (?non *Sphaeria hirsuta* Pers., Disp. Meth. Fung. p. 51 (1797)).

On naked, clayey soil in a lawn.

UPPLAND: Uppsala, Carolina-parken, S corner.

5.X-9.X.1961

leg. Ingvar Nordin (1039)

det. N. Lundqvist 1998

In 1817 (l.c.) Fries cited *Sphaeria hirsuta* Pers., but he later changed his mind; in 1823 (l.c.) he considered Persoon's fungus to be a variety of *Sphaeria racodium* Pers. – L.H. – The same species, on wood, is distributed as no. 3609b, c.

FUNGI EXSICCATI SUECICI, PRAESERTIM UPSALIENSES

Ed. cur. L. Holm et S. Ryman

3609b. Lasiosphaeria hirsuta (Fr.: Fr.) Ces. & De Not.

On a stump of some deciduous tree.

UPPLAND: Uppsala, Carolina-parken.

27.VIII.1963

leg. & det. Nils Lundqvist (4107)

confirm. O. Hilber 1996

The same species, on soil, is distributed as no. 3609a, and on oak wood, from Södermanland, as no. 3609c.

FUNGI EXSICCATI SUECICI, PRAESERTIM UPSALIENSES

Ed. cur. L. Holm et S. Ryman

3609c. Lasiosphaeria hirsuta (Fr.: Fr.) Ces. & De Not.

On a decaying log of *Quercus robur*.

SÖDERMANLAND: Gryt parish, S of Ånhammar.

14.IX.1985

leg. & det. Nils Lundqvist (15785)
confirm. O. Hilber 1996

The same species, from Uppland, is distributed as no. 3609a (on soil) and 3609b (on wood).

FUNGI EXSICCATI SUECICI, PRAESERTIM UPSALIENSES

Ed. cur. L. Holm et S. Ryman

3610. Chaetosphaerella phaeostroma (Durieu. & Mont.) E. Müll. & C.
Booth

Trans. Brit. Mycol. Soc. 58(1): 77 (1972). – Syn.: *Sphaeria phaeostroma* Durieu & Mont., Flore d'Algérie 1: 491 (1849).

On decaying fallen branches of ash, associated with *Eutypa flavovirens*.

UPPLAND: Gamla Uppsala parish, Fullerö, in a grove by R. Fyris.

9.V.1982

leg. & det. Nils Lundqvist (13656)

FUNGI EXSICCATI SUECICI, PRAESERTIM UPSALIENSES

Ed. cur. L. Holm et S. Ryman

3611. Zopfiella longicaudata (Cain) Arx

Proc. Kon. Nederl. Akad. Wet. ser. C. 76: 291 (1973). – Syn.: *Tripterospora longicaudata* Cain, Can. J. Bot. 34: 702 (1956).

On fresh horse dung in moist chamber.

UPPSALA: Uppsala, the riding-school.

11.IV.1968

leg. Erik Gunnerbeck (1415)
det. Nils Lundqvist 1968

FUNGI EXSICCATI SUECICI, PRAESERTIM UPSALIENSES

Ed. cur. L. Holm et S. Ryman

3612. *Zygospermella insignis* (Mouton) Cain

Mycologia 27: 227 (1935). – Syn.: *Delitschia insignis* Mouton, Bull. Soc. Roy. Bot. Belg. 36 (2): 13 (1897). – *Zygospermum setosum* Cain, Univ. Toronto Stud., Biol. Ser. 38: 74 (1934).

On old cow dung in coniferous forest.

UPPLAND: Läby parish, Vadbacka.

5.VIII.1965

leg. & det. Nils Lundqvist (4656)

FUNGI EXSICCATI SUECICI, PRAESERTIM UPSALIENSES

Ed. cur. L. Holm et S. Ryman

3613a. *Glomerella salicis* (Fuckel) L. Holm n. comb.

Basionym: *Sphaeria salicis* Auersw. ex Fuckel, F. Rhen. no. 913 in sched. (1864). Syn.: *Physalospora salicis* (Fuckel) Sacc., Syll. Fung. 1: 439 (1882). – *Glomerella miyabeana* (Fukushi) Arx, Phytopath. Zeitschr. 29: 448 (1957). – *Physalospora miyabeana* Fukushi, Ann. Phytopath. Soc. Japan 1: 100 (1921) (n.v.).

In dead, still attached shoots of *Salix* sp.

UPPLAND: Uppsala, Bondkyrka parish, the forest Nästen, between the Lurbo bridge and the cliff Predikstolen.

22.VI.1946

leg. Seth Lundell
det. L. Holm

The material agrees perfectly with the type (G!) and also matches the lengthy description of *Glomerella miyabeana* given by Butin (Mitteil. Biol. Bundesanstalt Land- und Forstwirtschaft Berlin-Dahlem 98: 30-35. 1960). – L.H. – Not reported from Sweden before. A recent collection, also from Uppland, is distributed as no. 3613b.

FUNGI EXSICCATI SUECICI, PRAESERTIM UPSALIENSES

Ed. cur. L. Holm et S. Ryman

3613b. *Glomerella salicis* (Fuckel) L. Holm

In dead or dying shoots from a stump of *Salix caprea*.

UPPLAND: Dalby parish, forest clearing c. 100 m SW of Jerusalem.

27.V.1998

leg. & det. K. & L. Holm (6123a)

FUNGI EXSICCATI SUECICI, PRAESERTIM UPSALIENSES

Ed. cur. L. Holm et S. Ryman

3614. *Discosphaerina niesslii* (Kunze ex Rehm) L. Holm, K. Holm & M.E. Barr

Karstenia 39(2): 60 (1999). – Syn.: *Laestadia niesslii* Kunze ex Rehm, Hedw. 20: 53 (1881).

On fallen leaves of *Salix caprea*.

GÄSTRIKLAND: Gävle, Lövudden.

5.IV.1953

leg. J.A. Nannfeldt (12710)

det. M.E. Barr & L. Holm

The material compares well with the type, Kunze, F. sel. exs. no. 241 on *Populus deltoidea*. – Not reported from Sweden before. – L.H.

FUNGI EXSICCATI SUECICI, PRAESERTIM UPSALIENSES

Ed. cur. L. Holm et S. Ryman

3615. *Discostroma tostum* (Berk. & Broome) Brockmann

Sydowia 28: 319 (1976) (“*tosta*”). – Syn.: *Sphaeria tosta* Berk. & Broome, Ann. Mag. Nat. Hist. ser. 2. 9: 381 (1852). – *Paradidymella tosta* (Berk. & Broome) Petr., Ann. Mycol. 25: 238 (1927).

On last year’s stems of *Epilobium angustifolium*.

UPPLAND: Dalby parish, Jerusalem, roadside.

22.V.1990

leg. & det. K. & L. Holm (5545)

FUNGI EXSICCATI SUECICI, PRAESERTIM UPSALIENSES

Ed. cur. L. Holm et S. Ryman

3616. *Melanconis stilbostoma* (Fr.: Fr.) Tul.

Ann. Sci. Nat. Bot. ser. 4. 5: 109 (1856). - Syn.: *Sphaeria stilbostoma* Fr., K. Vet.-Acad. Handl. 1817 p. 102: Fr., Syst. Mycol. 2: 403 (1823).

In dead cut branches of *Betula pendula* (= *Betula verrucosa*).

UPPLAND: Dalby parish, just S of Jerusalem.

29.XI.1998

leg. & det. K. & L. Holm (6185b)

Another collection, with appendiculate spores, is distributed as no. 3617.

FUNGI EXSICCATI SUECICI, PRAESERTIM UPSALIENSES

Ed. cur. L. Holm et S. Ryman

3617. *Melanconis stilbostoma* (Fr.) Tul. forma *sporibus appendiculatis*

In dead cut heaped up branches of *Betula pendula* (= *Betula verrucosa*).

UPPLAND: Dalby parish, c. 500 m SW of Jerusalem, forest edge.

16.III.1976

leg. & det. K. & L. Holm (746)

The material is typical *M. stilbostoma* except for the spores being provided with terminal globose gelatinous appendages, see Fig. 1, p. 21.

FUNGI EXSICCATI SUECICI, PRAESERTIM UPSALIENSES

Ed. cur. L. Holm et S. Ryman

3618. *Melanconis thelebola* (Fr.) Sacc.

Rev. Mycol. 3: 11: 45 (1881). – Syn.: *Sphaeria thelebola* Fr., Syst. Mycol. 2: 408 (1823). – *Pseudovalsella thelebola* (Fr.) Höhn.

In dead cut branches of *Alnus glutinosa*.

UPPLAND: Nysätra parish, just SW of the parsonage.

17.VIII.1939

leg. S. Lundell & E. Åberg
det. L. Holm

FUNGI EXSICCATI SUECICI, PRAESERTIM UPSALIENSES

Ed. cur. L. Holm et S. Ryman

3619. *Prosthecius berkeleyi* (Tul.) Wehm.

Univ. Mich. Studies, Sci. Ser. 14: 104 (1941). – Syn.: *Melanconis Berkeleaei* (sic) Tul., Ann. Sci. Nat. Bot. ser. 4. 5: 110 (1856). – *Hapalocystis bicaudata* Fuckel, F. Rhen. no. 586 (1863), non *Hapalocystis Berkeleyi* Fuckel, F. Rhen. no. 585 (1863).

In dead twigs of a felled elm (*Ulmus* sp.).

UPPLAND: Uppsala, Botanic Garden.

24.IV.1974

leg. & det. K. & L. Holm (272c)

FUNGI EXSICCATI SUECICI, PRAESERTIM UPSALIENSES

Ed. cur. L. Holm et S. Ryman

3620. Sydowiella fenestrans (Duby) Petr.

Ann. Mycol. 21: 30 (1923). – Syn.: *Sphaeria fenestrans* Duby in Klotzsch-Rabenh., Herb. Mycol. ed. 1 no. 1933 (1855) (n.v.)

In last year's stems of *Epilobium angustifolium*.

UPPLAND: Dalby parish, roadside near Jerusalem.

25.II.1990

leg. & det. K. & L. Holm (5506)

FUNGI EXSICCATI SUECICI, PRAESERTIM UPSALIENSES

Ed. cur. L. Holm et S. Ryman

3621. Ophiovalsa hypodermia (Fr.: Fr.) L. Holm n. comb.

Basionym: *Sphaeria hypodermia* Fr., Mykol. Hefte 2: 49 (1823) (“*hypoderma*”): Fr., Syst. Mycol. 2: 407 (1823); Scler. Suec. Decad. 1-IV no. 32 (1819) (nom.nud.) – Syn.: *Cryptosporella hypodermia* (Fr.) Sacc., Mich. 1:30 (1877). – *Winterella hypodermia* (Fr.) J. Reid & C. Booth, Can. J. Bot. 67: 880 (1989).

In dead twigs of a felled *Ulmus* sp.

UPPLAND: Uppsala, Botanic Garden.

24.IV.1974

leg. & det. K. & L. Holm (272b)

Reid & Booth (l.c.) presented strong evidence for a close relationship between this species and “*Winterella*” Kuntze, i.e. *Ophiovalsa* Petr. – The nomenclatural problems involved were discussed by us in Syst. Asc. 11(1): 30 (1992). – L.H.

FUNGI EXSICCATI SUECICI, PRAESERTIM UPSALIENSES

Ed. cur. L. Holm et S. Ryman

3622. Ophiovalsa suffusa (Fr.) Petr.

Sydowia 19: 272 (1966). – Syn.: *Sphaeria suffusa* Fr., K. Vet.-Acad. Handl. 1817 p. 95: Fr., Syst. Mycol. 2: 399 (1823).

In dead, fallen twigs of *Alnus glutinosa*.

UPPLAND: Dalby parish, Hammarskog, c. 1 km SE of the manor, shore of Lake Mälaren.

22.III.1977

leg. & det. K. & L. Holm (955a)

Matured at Jerusalem until 26.V.1977.

FUNGI EXSICCATI SUECICI, PRAESERTIM UPSALIENSES

Ed. cur. L. Holm et S. Ryman

3623. *Valsa auerswaldii* Nitschke

Pyr. Germ. p. 225 (1870).

In chopped off branches of *Rhamnus frangula* (= *Frangula alnus*).

UPPLAND: Dalby parish, c. 300 m NW of the farm Viggeby.

13.XII.1998 leg. & det. K. & L. Holm (6188)

FUNGI EXSICCATI SUECICI, PRAESERTIM UPSALIENSES

Ed. cur. L. Holm et S. Ryman

3624. *Valsa ceratosperma* (Tode: Fr.) Maire

Public. Inst. Bot. Barcelona 3, No. 4: 20 (1937). – Syn.: *Sphaeria ceratosperma* Tode, Fungi Mecklenb. 2: 53 (1791) (“*ceratospermum*”): Fr., Syst. Mycol. 2: 364 (1823).

In dead stems of *Rubus idaeus*.

VÄSTMANLAND: Nora parish, Järleån Nature Reserve, SSE of Hammarby.

17.IV.1993 leg. & det. Nils Lundqvist (19420)

FUNGI EXSICCATI SUECICI, PRAESERTIM UPSALIENSES

Ed. cur. L. Holm et S. Ryman

3625. *Valsa cincta* (Fr.: Fr.) Fr.

Summa Veg. Scand. p. 411 (1849). – Syn.: *Sphaeria cincta* Fr., K. Vet.-Acad. Handl. 1817 p. 90: Fr., Syst. Mycol. 2: 387 (1823), non *Sphaeria cincta* DC., Fl. Franç. 6: 119 (1815).

In dead twigs of a chopped off tree of *Prunus padus*.

UPPLAND: Dalby parish, Tuna, field edge S of the high-road.

8.II.1988 leg. & det. K. & L. Holm (4759c)

There is no original material of *Sphaeria cincta* Fr. in UPS to substantiate the interpretation of the name, but Nitschke, whose concept has been generally accepted, claimed to have seen “specimina originalia” in G. Kunze’s herbarium (Pyr. Germ. p. 229. 1870). – L.H.

FUNGI EXSICCATI SUECICI, PRAESERTIM UPSALIENSES

Ed. cur. L. Holm et S. Ryman

3626. *Valsa melanodiscus* G.H. Otth

Mittheil. Naturforsch. Ges. Bern 1870 p. 97 (1871).

In dead twigs of *Alnus* sp.

GÄSTRIKLAND: Gävle parish, Lövudden.

26.III.1959

leg. J.A. Nannfeldt (15606)

det. L. Holm

The determination is tentative but the material accords with the description in Spielman's monograph (Can. J. Bot. 63: 1355-1378, 1985). – L.H. – Not recorded from Sweden before.

FUNGI EXSICCATI SUECICI, PRAESERTIM UPSALIENSES

Ed. cur. L. Holm et S. Ryman

3627. *Valsella nigro-annulata* Fuckel

Jahrb. Nassau. Ver. Naturkunde 25: 317 (1871).

In dead cut branches of *Salix pentandra* lying on the ground.

UPPLAND: Dalby parish, c. 200 m S of Jerusalem.

15.V.1985

leg. & det. K. & L. Holm (3524a)

FUNGI EXSICCATI SUECICI, PRAESERTIM UPSALIENSES

Ed. cur. L. Holm et S. Ryman

3628. *Xenotypa aterrима* (Fr.) Petr.

Sydowia 9: 499 (1955). – Syn.: *Hydnum aterrimum* Fr., Syst. Mycol. 1: 416 (1821). – *Eutypa aterrима* (Fr.) Nannf., Trans. Brit. Mycol. Soc. 20: 204 (1936).

In dead branches of *Betula pendula* (= *Betula verrucosa*).

VÄSTERBOTTEN: Umeå parish, Brännland, c. 200 m ESE of the Railway Station.

16.VIII.1986

leg. & det. O. Eriksson, K. & L. Holm (4153)

The same species, from Uppland, was distributed as no. 2163 ("*Eutypa aterrима*").

FUNGI EXSICCATI SUECICI, PRAESERTIM UPSALIENSES

Ed. cur. L. Holm et S. Ryman

3629. *Elaphomyces leveillei* Tul. & C. Tul.

Ann. Sci. Nat. Bot. ser. 2. 16: 21 (1841).

Hypogeous, 2-4 cm under the moss carpet in old spruce forest.

DALARNA: Leksand parish, Mt Åsledeberget, c. 4 km NE of the parish church, alt. 230-240 m.

6.VIII.1980

leg. & det. Lars Kers (6066)

Ascocarps numerous near birch trees, embedded in dark brown, compact, moist and peatlike moss litter with pH 4.15. Mycelium abundant, bright pale yellow. – L.K.

This collection was recorded by Kers in his study on *E. anthracinus* and *E. leveillei* in Scandinavia (Svensk Bot. Tidskr. 77: 43-56. 1983).

FUNGI EXSICCATI SUECICI, PRAESERTIM UPSALIENSES

Ed. cur. L. Holm et S. Ryman

3630. *Erysiphe biocellata* Ehrenb.

N. Acta Acad. Leopold.-Carol. Nat. Cur. 10: 211 (1821) ("*Erysibe*").

On *Lycopus europaeus*.

VÄSTERGÖTLAND: Göteborg, Botanic Garden, the Arboretum, at the outlet from Finnsmossen.

1. 14.VIII.1984

leg. & det. Ingvar Nordin (9320)

2. 17.IX.1984

leg. & det. Ingvar Nordin (9390)

FUNGI EXSICCATI SUECICI, PRAESERTIM UPSALIENSES

Ed. cur. L. Holm et S. Ryman

3631. *Erysiphe cichoriacearum* DC.

Flore Franç. 2: 274 (1805) ("*cichoracearum*").

On *Sonchus palustris*.

HALLAND: Fjärås parish, Tjolöholm, at the shore, among *Phragmites*.

23.IX.1984

leg. & det. Ingvar Nordin (9402)

This species is distributed on various other hosts as nos. 652, 1183, 1184, 1464-1467, 2765-2767, 3023, and 3024.

FUNGI EXSICCATI SUECICI, PRAESERTIM UPSALIENSES

Ed. cur. L. Holm et S. Ryman

3632. Erysiphe fischeri S. Blumer

Beitr. Krypt. Flora Schweiz 7(1): 262 (1933).

On *Senecio viscosus*.

VÄSTMANLAND: Västerås, Pilgatan, waste place.

12.VIII.1988 leg. & det. Ingvar Nordin (10560)

Young perithecia are present with the anamorph.

FUNGI EXSICCATI SUECICI, PRAESERTIM UPSALIENSES

Ed. cur. L. Holm et S. Ryman

3633. Erysiphe heraclei DC.

Fl. Franç. 2: 274 (1805).

On *Chaerophyllum temulum*.

GOTLAND: Visby, Botanic Garden.

7.X.1987 leg. & det. Ingvar Nordin (10299)

This species is also distributed as no. 659 on *Anthriscus sylvestris*, 1478 on *Sium sisarum*, 1479 on *Torilis nodosa*, all as *Erysiphe umbelliferarum* and as no. 3634 on *Peucedanum palustre*.

FUNGI EXSICCATI SUECICI, PRAESERTIM UPSALIENSES

Ed. cur. L. Holm et S. Ryman

3634. Erysiphe heraclei DC.

On *Peucedanum palustre*.

VÄSTERGÖTLAND: Göteborg, Botanic Garden, Änggårdsbergen, at the outlet from Axlemossen.

22.VIII.1988 leg. & det. Ingvar Nordin (10581)

This species is also distributed as nos. 659 on *Anthriscus sylvestris*, 1478 on *Sium sisarum*, 1479 on *Torilis nodosa*, all as *Erysiphe umbelliferarum*, and as no. 3633 on *Chaerophyllum temulum*.

FUNGI EXSICCATI SUECICI, PRAESERTIM UPSALIENSES

Ed. cur. L. Holm et S. Ryman

3635a. Erysiphe magnicellulata U. Braun

Feddes Repert. 88(9-10): 656 (1978).

On cultivated *Phlox paniculata*.

GOTLAND: Burs parish, L. Gläves.

6.X.1984 leg. & det. Ingvar Nordin (9432)

This collection is cited by L. Jonsell, Svensk Bot. Tidskr. 81: 231 (1987). – The same species from Uppland is distributed as no. 3635b.

FUNGI EXSICCATI SUECICI, PRAESERTIM UPSALIENSES

Ed. cur. L. Holm et S. Ryman

3635b. Erysiphe magnicellulata U. BraunOn cultivated *Phlox paniculata*.

UPPLAND: Uppsala, Sibyllegatan 17.

7.X.1983 leg. Raghild Nannfeldt
det. J.A. Nannfeldt

This collection is cited by L. Jonsell, Svensk Bot. Tidskr. 81: 231 (1987). – The same species, from Gotland, is distributed as no. 3635a.

FUNGI EXSICCATI SUECICI, PRAESERTIM UPSALIENSES

Ed. cur. L. Holm et S. Ryman

3636. Erysiphe ranunculi Grev.Fl. Edin. p. 461 (1824). – Syn.: *Erysiphe nitida* (Wallr.) Rabenh., Deutschl. Krypt.-Fl. 1: 231 (1844).On cultivated *Clematis texensis*.

VÄSTERGÖTLAND: Göteborg, Botanic Garden.

4.XI.1982 leg. & det. Ingvar Nordin (8856)

The species is simultaneously issued, on *Clematis vitalba*, as no. 3637, and previously, as *Erysiphe nitida*, on *Delphinium* spp. (nos. 656, 1476) and on *Ranunculus* spp. (nos. 657, 658, 1051, 2782).

FUNGI EXSICCATI SUECICI, PRAESERTIM UPSALIENSES

Ed. cur. L. Holm et S. Ryman

3637. Erysiphe ranunculi Grev.

On cultivated *Clematis vitalba*.

VÄSTERGÖTLAND: Göteborg, Botanic Garden.

14.VIII.1984

leg. & det. Ingvar Nordin (9323)

The species is simultaneously issued, on *Clematis texensis*, as no. 3636, and previously, as *Erysiphe nitida*, on *Delphinium* spp. (nos. 656, 1476) and on *Ranunculus* spp. (nos. 657, 658, 1051, 2782).

FUNGI EXSICCATI SUECICI, PRAESERTIM UPSALIENSES

Ed. cur. L. Holm et S. Ryman

3638. Microsphaera berberidis (DC.)

Syn. *Erysiphe berberidis* DC., Fl. Franç., ed. 3, 2: 275 (1805). *Calocladia berberidis* (DC.) Lév., Ann. Sci. Nat. Bot. ser. 3. 15: 159 (1851).

On cultivated *Berberis x ottawensis*.

VÄSTMANLAND: Västerås, Jakobsberg, in a garden.

12.VIII.1988

leg. & det. Ingvar Nordin (10557)

The combination *Microsphaera berberidis* is generally ascribed to Lévillé (op. cit. 381). In fact, however, he there introduced the generic name *Microsphaera* to replace the illegitimate *Calocladia* Lév., non Grev., but he failed to publish the appurtenant combinations. I leave it an open question when, where and by whom it was done. – L.H. – The same species, on *Mahonia aquifolium*, is distributed as no. 3639.

FUNGI EXSICCATI SUECICI, PRAESERTIM UPSALIENSES

Ed. cur. L. Holm et S. Ryman

3639. Microsphaera berberidis (DC.)

On cultivated *Mahonia aquifolium*.

VÄSTMANLAND: Västerås, plantation at the hospital.

30.VII.1988

leg. & det. Ingvar Nordin (10529)

The same species, on *Berberis x ottawensis*, is simultaneously issued as no. 3638.

FUNGI EXSICCATI SUECICI, PRAESERTIM UPSALIENSES

Ed. cur. L. Holm et S. Ryman

3640. *Microsphaera magnusii* S. Blumer

Beitr. Krypt.-Fl. Schweiz 7(1): 299 (1933).

On cultivated *Lonicera coerulea*.

VÄSTERGÖTLAND: Göteborg, Masthugget, Kompassgatan, in a hedge.

2.VIII.1988

leg. & det. Ingvar Nordin (10537)

FUNGI EXSICCATI SUECICI, PRAESERTIM UPSALIENSES

Ed. cur. L. Holm et S. Ryman

3641a. *Microsphaera palczewskii* Jacz.

Karm. Opređ. Gribov 2: 339 (1927) (non vidi).

On cultivated *Caragana arborescens*.

VÄSTERGÖTLAND: Göteborg, Änggården, Särögatan 1, in a hedge.

30.X.1985

leg. & det. Ingvar Nordin (9832)

This find was recorded by L. Jonsell, Sv. Bot. Tidskr. 81: 232 (1987). The same species, from Västerås, is distributed as no. 3641b.

FUNGI EXSICCATI SUECICI, PRAESERTIM UPSALIENSES

Ed. cur. L. Holm et S. Ryman

3641b. *Microsphaera palczewskii* Jacz.On cultivated *Caragana arborescens*.

VÄSTMANLAND: Västerås, Götgatan, in a hedge.

10.IX.1988

leg. & det. Ingvar Nordin (10632)

The same species, from Göteborg, is distributed as no. 3641a.

FUNGI EXSICCATI SUECICI, PRAESERTIM UPSALIENSES

Ed. cur. L. Holm et S. Ryman

3642. *Microsphaera trifolii* (Grev.) U. Braun

N. Hedw. 34: 685 (1981). – Syn.: *Erysiphe trifolii* Grev., Fl. Edin. p. 459 (1824). – *Erysiphe martii* Lév.

On cultivated *Caragana arborescens*.

NÄRKE: Örebro, Bergslagsgatan 8, in a hedge.

25.IX.1988

leg. Ingvar Nordin (10658)

det. L. Jonsell

The species, on *Trifolium hybridum*, is simultaneously issued as no. 3643 and was previously distributed, on various other host plants, as nos. 654, 655, 1186, 1475, 2775-2779, all as *Erysiphe martii*, and further as nos. 3028, 3029 and 3194, as *Erysiphe trifolii*.

FUNGI EXSICCATI SUECICI, PRAESERTIM UPSALIENSES

Ed. cur. L. Holm et S. Ryman

3643. *Microsphaera trifolii* (Grev.) U. Braun

On *Trifolium hybridum*.

VÄSTERGÖTLAND: Göteborg, Hisingen, Stig Center, roadside.

23.VIII.1984

leg. & det. Ingvar Nordin (9348)

This species, on *Caragana*, is issued simultaneously as no. 3642 and was previously distributed, on other *Trifolium* spp., as nos 2776-2779, 3029, and on various other hosts as nos. 654, 655, 1186, 1475 and 2775 (as *Erysiphe martii*).

FUNGI EXSICCATI SUECICI, PRAESERTIM UPSALIENSES

Ed. cur. L. Holm et S. Ryman

3644a. *Microsphaera sambucicola* Henn.

Engl.. Bot. Jahrb. 29: 148 (1901). – Syn.: *M. van-bruntiana* W.R. Gerard var. *sambuci-racemosae* U. Braun, Mycotaxon 19: 376 (1984).

On *Sambucus racemosa*.

VÄSTERGÖTLAND: Broddetorp parish, Fågeludden.

29.VII.1986

leg. & det. Ingvar Nordin (10032)

As Scholler (Regensb. Mykol. Schriften 6: 135, 1996) has pointed out, this taxon deserves specific rank. – L.H. & S.R.

This collection is cited by L. Jonsell, Sv. Bot. Tidskr. 81: 384 (1987). – The same taxon, from Västmanland, is simultaneously issued as no. 3644b.

FUNGI EXSICCATI SUECICI, PRAESERTIM UPSALIENSES

Ed. cur. L. Holm et S. Ryman

3644b. *Microsphaera sambucicola* Henn.On *Sambucus racemosa*.

VÄSTMANLAND: Västerås, wooded ground at the hospital.

30.VII.1988

leg. & det. Ingvar Nordin (10530)

The same taxon, from Västergötland, is issued as no. 3644a.

FUNGI EXSICCATI SUECICI, PRAESERTIM UPSALIENSES

Ed. cur. L. Holm et S. Ryman

3645. *Podosphaera tridactyla* (Wallr.) de BaryAbh. Senckenb. Naturforsch. Ges. 7: 408 (1870). – Syn.: *Alphitomorpha tridactyla* Wallr., Fl. Crypt. Germ. 2: 753 (1833).On cultivated *Prunus padus*, abundant on stump shoots.

VÄSTERGÖTLAND: Göteborgs parkish ground S of Näckrosdammen.

23.VIII.1989

leg. & det. Ingvar Nordin (10845)

FUNGI EXSICCATI SUECICI, PRAESERTIM UPSALIENSES

Ed. cur. L. Holm et S. Ryman

3646a. *Sawadaia bicornis* (Wallr.: Fr.) HommaJ. Fac. Agric. Hokkaido Imp. Univ. 38: 371 (1937). – Syn. *Alphitomorpha bicornis* Wallr., Verh. Ges. Naturforsch. Freunde Berlin 1: 38 (1819); Fr., Syst. Mycol. 3: 244 (1829). – *Uncinula bicornis* (Wallr.) Lév., Ann. Sci. Nat. Bot. ser. 3. 15: 153 (1851).On cultivated *Acer campestre*.

VÄSTERGÖTLAND: Göteborg, Saltholmen, old plantation at the harbour.

4.IX.1986

leg. & det. Ingvar Nordin (10062a)

The species, on the same host, from Östergötland, is distributed as no. 3646b and on *Acer pseudoplatanus*, as no. 3647.

FUNGI EXSICCATI SUECICI, PRAESERTIM UPSALIENSES

Ed. cur. L. Holm et S. Ryman

3646b. Sawadaia bicornis (Wallr.) Homma

On cultivated *Acer campestre* in a hedge.

ÖSTERGÖTLAND: Vadstena, Krabbegatan.

20.IX.1986

leg. & det. Ingvar Nordin (10070)

This species, on the same host, from Västergötland, is distributed as no. 3646a and on *Acer pseudoplatanus*, as no. 3647.

FUNGI EXSICCATI SUECICI, PRAESERTIM UPSALIENSES

Ed. cur. L. Holm et S. Ryman

3647. Sawadaia bicornis (Wallr.) Homma

On cultivated *Acer pseudoplatanus*.

VÄSTERGÖTLAND: Göteborg, Masthugget, at August Kobbsgatan.

25.IX.1989

leg. & det. Ingvar Nordin (10905)

The species, on *Acer campestre*, is distributed as no. 3646 a & b.

FUNGI EXSICCATI SUECICI, PRAESERTIM UPSALIENSES

Ed. cur. L. Holm et S. Ryman

3648. Sphaerotheca balsaminae (Wallr.) Kari

Ann. Univ. Turku A. 2: 23.99 (1957). – Syn. *Alphitomorpha lamprocarpa* β *balsaminae* Wallr., Fl. Crypt. Germ. 2: 758 (1833).

On *Impatiens noli-tangere*.

HALLAND: Fjärås parish, Tjolöholm, c. 500 m NNW of the castle.

16.IX.1984

leg. & det. Ingvar Nordin (9386)

FUNGI EXSICCATI SUECICI, PRAESERTIM UPSALIENSES

Ed. cur. L. Holm et S. Ryman

3649. Uncinula adunca (Wallr.: Fr.) Lév.

Ann. Sci. Nat. Bot. ser. 3.15: 151 (1851). – Syn.: *Alphitomorpha adunca* Wallr., Verh. Ges. Naturforsch. Freunde Berlin 1: 37 (1819); Fr., Syst. Mycol. 3: 245 (1829) (sub *Erysiphe*). – *Uncinula salicis* (DC.) G. Winter in Rabenh. Krypt.-Fl. 1(2): 40 (1884).

On *Salix repens* var. *nitida*.

GOTLAND: Tofta parish, Tofta strand, dunes by the sea.

7.X.1998 leg. & det. Nils Lundqvist (21085)

The species, on *Salix caprea*, is earlier distributed as nos. 662, 1195 and 3041.

FUNGI EXSICCATI SUECICI, PRAESERTIM UPSALIENSES

Ed. cur. L. Holm et S. Ryman

3650. Ampelomyces quisqualis Ces. ex Schltdl.

Bot. Zeitung 10: 302 (1852).

Parasitic on *Erysiphe sordida* on *Plantago coronopus*.

HALLAND: Morup parish, Morups tånge.

11.VIII.1984 leg. Ingvar Nordin (9313)
det. L. Holm

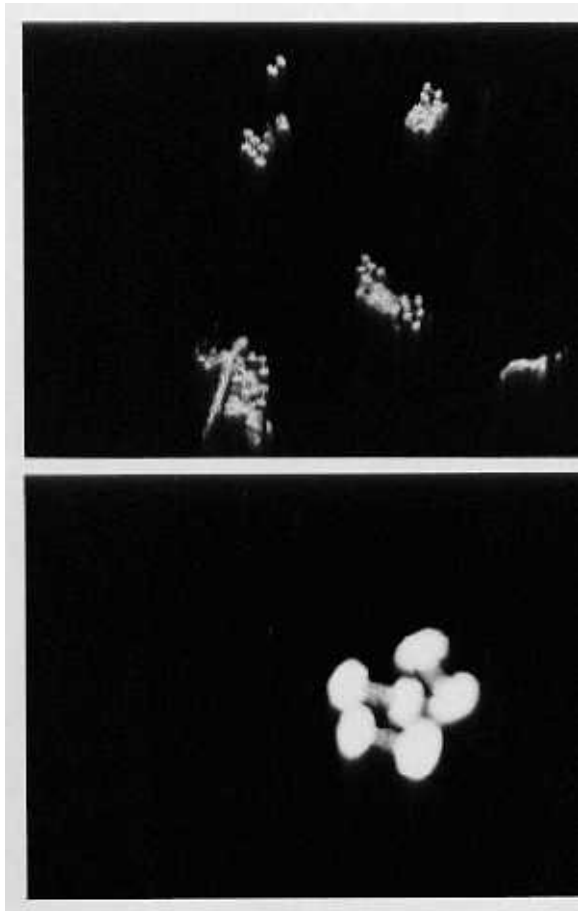


Fig. 1. *Melanconis stilbostoma* forma *sporis appendiculatis*. Spores in Indian ink. Upper $\times 210$, lower $\times 530$

Publication from the Herbarium, University of Uppsala

Nos 1–19. See back cover of *Thunbergia* 4

THUNBERGIA (<http://www-hotel.uu.se/evolmuseum/fytotek/>)

1. L. Tibell – *Caliciales exsiccatae*, Fasc. 6 (Nos 126–150), 1986
2. R. Moberg – *Lichenes sel. exs. Upsal.*, Fasc. 1 (Nos 1–25), 1986
3. R. Santesson – *Fungi lichenic. exs.*, Fasc. 3 & 4 (Nos 51–100), 1986
4. O. Constantinescu & R. Moberg – *Computer assistance and some time-saving routines in UPSC culture collection*, 1987
5. R. Moberg – *Lichenes sel. exs. Upsal.*, Fasc. 2 (Nos 26–50), 1987
6. R. Santesson – *Fungi lichenic. exs.*, Fasc. 5 & 6 (Nos 101–150), 1988
7. R. Moberg – *Lichenes sel. exs. Upsal.*, Fasc. 3 (Nos 51–75), 1989
8. L. Tibell – *Caliciales exsiccatae*, Fasc. 7 (Nos 151–175), 1989
9. N. Lundqvist – *Fungi fimicoli exs.*, Fasc. 3 (Nos 51–75), 1989
10. L. Holm & J.A. Nannfeldt – *Fungi exsiccati Suecici*, Fasc. 67 (Nos 3301–3350), 1990
11. L. Holm & J.A. Nannfeldt – *Fungi exsiccati Suecici*, Fasc. 68 (Nos 3351–3400), 1990
12. D.O. Wijnands – *Correct author citation for the species described on material collected by Thunberg in Japan*, 1990
13. L. Tibell – *Caliciales exsiccatae*, Fasc. 8 (Nos 176–200), 1990
14. R. Moberg – *Lichenes sel. exs. Upsal.*, Fasc. 4 (Nos 76–100), 1991
15. O. Constantinescu – *An annotated list of Peronospora names*, 1991
16. L. Holm & J.A. Nannfeldt – *Fungi exsiccati Suecici*, Fasc. 69 (Nos 3401–3450), 1992
17. L. Holm & J.A. Nannfeldt – *Fungi exsiccati Suecici*, Fasc. 70 (Nos 3451–3500), 1992
18. L. Tibell – *Caliciales exsiccatae*, Fasc. 9 (Nos 201–225), 1993.
19. S. Lundqvist & R. Moberg – *The Pehr Kalm Herbarium in UPS, a collection of North American plants*, 1993
20. R. Moberg – *Lich. sel. exs. Upsal.*, Fasc. 5 & 6 (Nos 101–150), 1994
21. R. Santesson – *Fungi lichenic. exs.*, Fasc. 7 & 8 (Nos 151–200), 1994
22. R. Santesson – *Fungi lichenic. exs.*, Fasc. 9 & 10 (Nos 201–250), 1994
23. L. Tibell – *Caliciales exsiccatae*, Fasc. 10 (Nos 226–250), 1996
24. R. Moberg – *Lich. sel. exs. Upsal.*, Fasc. 7 & 8 (Nos 151–200), 1996
25. N. Lundqvist – *Fungi fimicoli exs.*, Fasc. 4 & 5 (Nos 76–125), 1997
26. L. Holm & S. Ryman – *Fungi exsiccati Suecici*, Fasc. 71 & 72 (Nos 3501–3600), 1997
27. R. Moberg – *Lich. sel. exs. Upsal.*, Fasc. 9 & 10 (Nos 201–250), 1997
28. R. Santesson – *Fungi lichenic. exs.*, Fasc. 11 & 12 (Nos 251–300), 1998
29. R. Moberg – *Lich. sel. exs. Upsal.*, Fasc. 11 & 12 (Nos 251–300), 1999
30. L. Holm & S. Ryman – *Fungi exsiccati Suecici*, Fasc. 73 (Nos 3601–3650), 2000

Published June 26th, 2000

ISSN-0283-2275

Universitetstryckeriet, Uppsala 2000